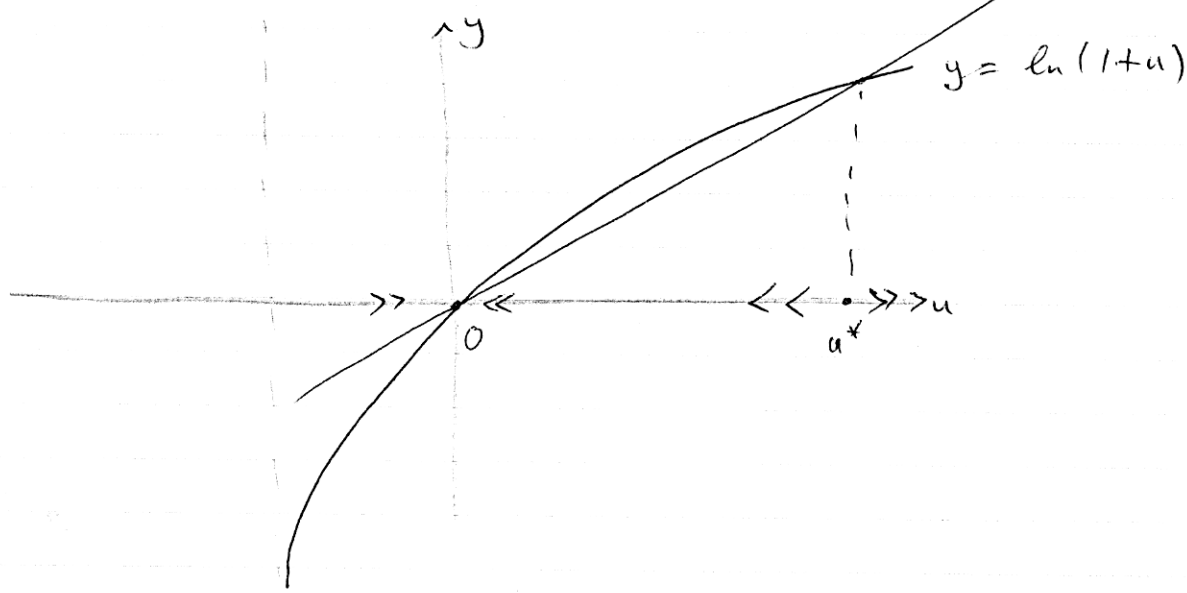


b) $u' = hu - \ln(1+u)$



For $h < 0$: two critical points

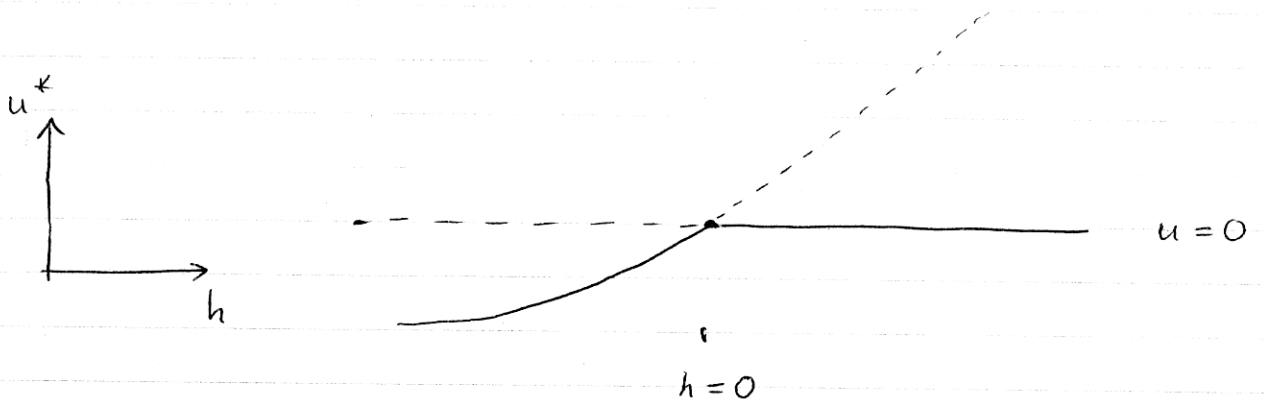
$-1 < u^* < 0$
 $u^* = 0$

STABLE
 UNSTABLE

For $h > 0$:

$u^* = 0$
 $u^* > 0$

~~STABLE~~
 UNSTABLE



TRANS-CRITICAL BIFURCATION.